

Situated on one of the most secluded lots at Beach Road Holiday Homes estate, you will enjoy a seemingly endless stretch of bushland as your 'backyard' at House 37.

37

BEACH ROAD  
HOLIDAY HOMES

Welcome the cooling sea breeze this two-storey home is designed to capture, with flow-through ventilation and thoughtful window placement.

Wash off the day's outdoor activities in your own private beach shower, lock your recreational goodies away in secure storage and drop your wet towels in the laundry... all before you enter the main house.

Inside, the generous open plan lounge and dining area flows through to a private screened deck boasting direct access to the kitchen, an ideal set up for creating and enjoying those long relaxed holiday meals.

The upper storey master suite with spacious ensuite bathroom and private deck take great advantage of the tranquil bush outlook.

**Architect: Planit Architects**

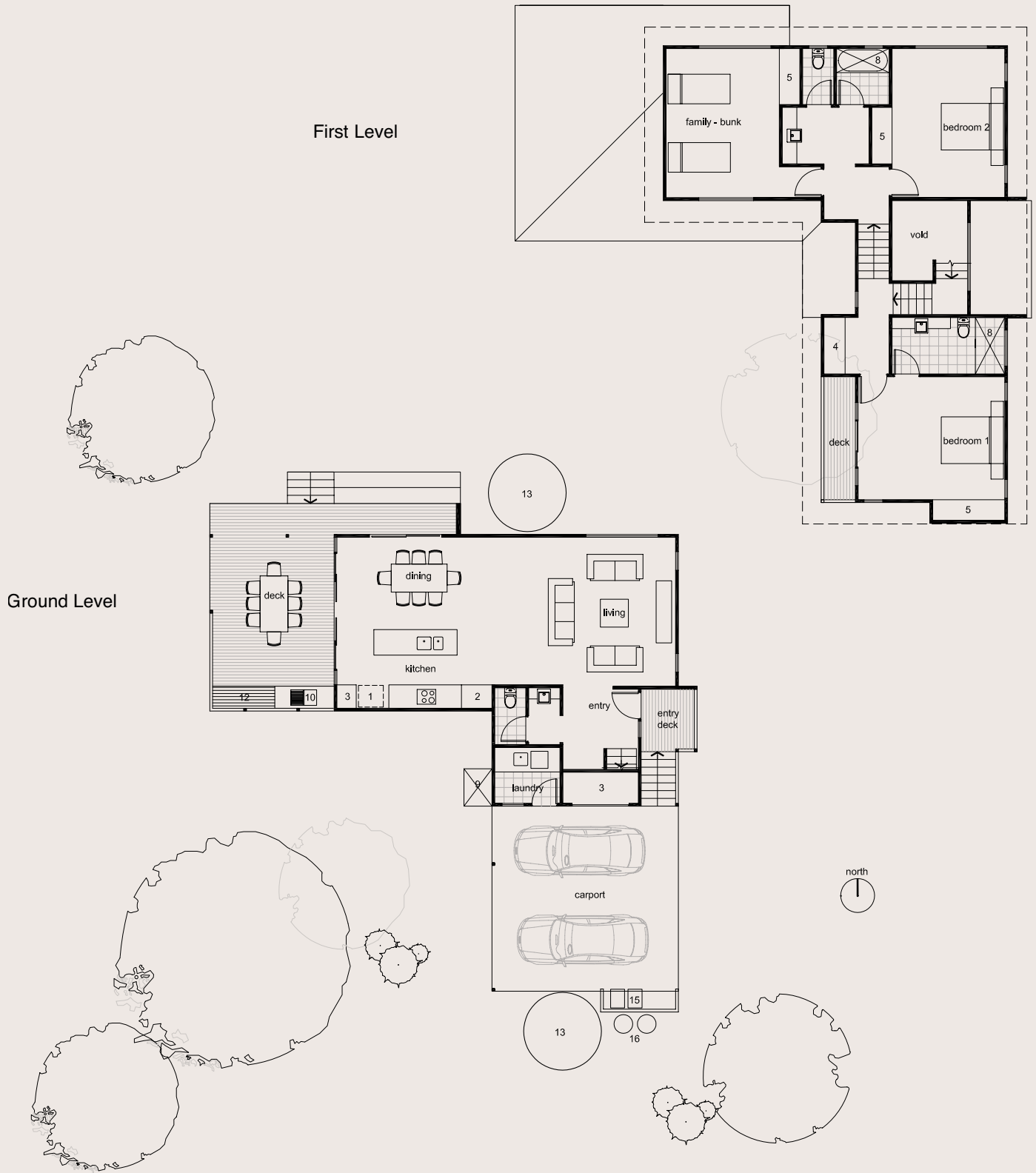
Planit Architects have utilised their impressive residential and environmental design credentials to create a home that transports you from the every day.

Nestled at a far corner of the project, this home embraces the conservation areas to the south and west, creating a feeling of tranquil seclusion.

The considerate yet highly functional environmental design integrates with the surrounding natural landforms and wooded areas that are characteristic of the site.

The sensitivities of the precious natural environment were acknowledged and catered to through a process of specialised planning and analysis. The result is a home uncompromised in beauty, environmental consideration and functionalit.





**Legend**

- |          |                  |                |
|----------|------------------|----------------|
| 1 Fridge | 6 Walk in robe   | 12 Day bed     |
| 2 Pantry | 7 Bag rack       | 13 Water tank  |
| 3 Store  | 8 Shower         | 14 Drying area |
| 4 Linen  | 9 Outdoor shower | 15 Bin store   |
| 5 Robe   | 10 Bbq           | 16 Gas bottle  |
|          | 11 Seat          |                |

**Floor Area**

Living area	162m <sup>2</sup>
Verandah	34m <sup>2</sup>
Car port / Storage	47m <sup>2</sup>
<b>Total</b>	<b>243m<sup>2</sup></b>

The above drawings and plans are provided for illustrative purposes only. They may not be drawn to scale and must not be relied on for any purpose whatsoever. Prospective purchasers must make and rely on their own enquiries as to all matters affecting the property. A sustainability declaration in respect of the property is available from the office of Tom Offermann Real Estate.